

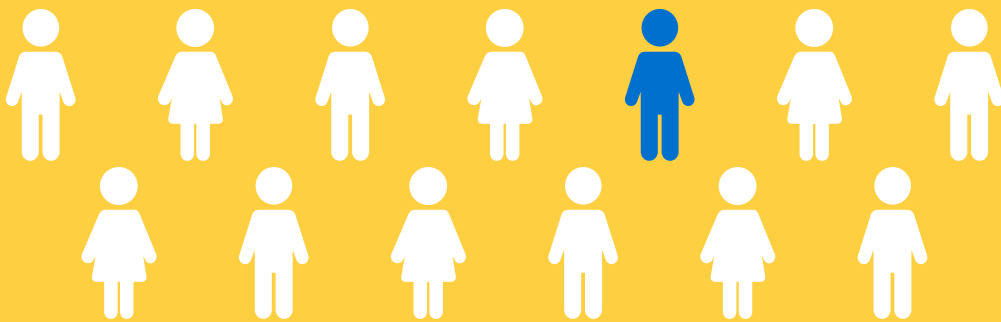


CHILDHOOD BEREAVEMENT ESTIMATION MODEL

UNDERSTANDING CHILDHOOD GRIEF IN THE U.S.

NEW HAMPSHIRE 2019

The Childhood Bereavement Estimation Model (CBEM) is a statistical tool that approximates rates of U.S. children and youth who will experience the death of a parent and/or sibling by the time they reach adulthood. The CBEM is updated annually using national and regional vital statistics¹ to generate prevalence estimates. This report aggregates data from 2013 to 2017.



1 in 13

CHILDREN IN NEW HAMPSHIRE WILL EXPERIENCE THE DEATH OF A PARENT OR SIBLING BY AGE 18

22nd

CBEM RANKING BY STATE

7.7%

OF CHILDREN IN NEW HAMPSHIRE ARE BEREAVED HIGHER THAN U.S. OVERALL RATE OF 7.0%

>17K

BEREAVED CHILDREN IN NEW HAMPSHIRE



>17K
BY AGE 18

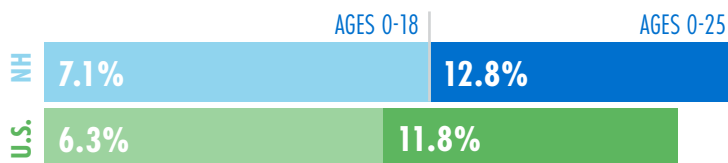


>44K
BY AGE 25

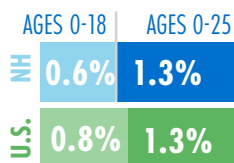


MORE THAN **2X** HIGHER

DEATH OF A PARENT



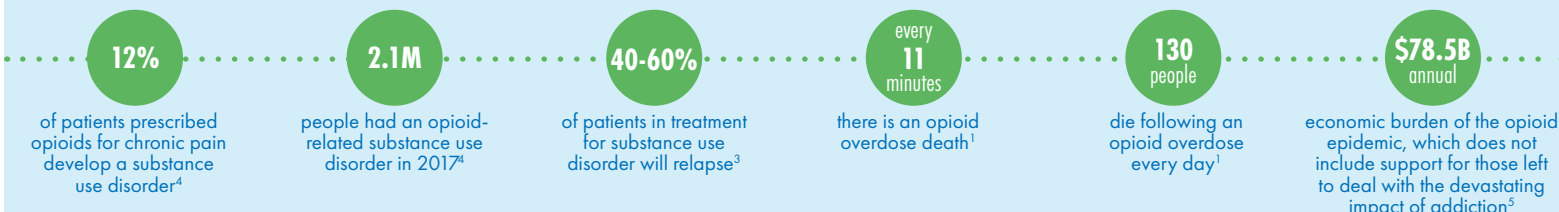
DEATH OF A SIBLING



FOR MORE INFO ABOUT THE CBEM AND ADDITIONAL STATE AND NATIONAL DATA, VISIT WWW.JUDISHOUSE.ORG/CBEM

ADDICTION IN THE U.S.

Substance use disorder is a chronic health condition that requires continuous treatment.³



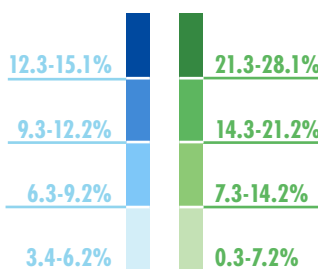
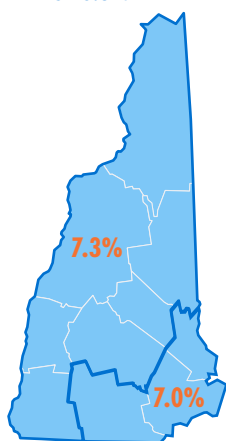
WHAT ARE OPIOIDS?

Opioids are pain relieving drugs made from natural or synthetic chemicals. Some opioids are illegal, like heroin. Others are routinely prescribed medications, like morphine and oxycodone.

NEW HAMPSHIRE

CHILDHOOD BEREAVEMENT*²

NATIONAL AVERAGE 6.3%



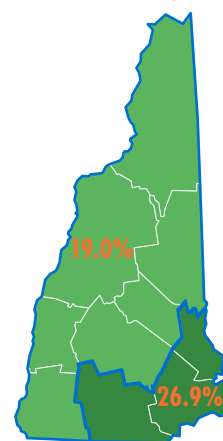
ABOVE NATIONAL AVERAGE

BELOW NATIONAL AVERAGE

* Bereavement due to parent death before age 18

OPIOID-RELATED DEATHS^{†1,2}

NATIONAL AVERAGE 12.8%



†Adults ages 25-54 years old

Children and families bereaved due to an opioid overdose death often experience a range of hardships that may include frequent moves, out of home placements, decreased financial stability, and daily disappointments. These adverse experiences compound the invisible costs of addiction.

OPIOID TRENDS

FOSTER CARE PLACEMENT⁶



NH 1.0%
U.S. 39.0%

% OF CHILDREN ENTERING FOSTER CARE DUE TO PARENTAL SUBSTANCE ABUSE (2017)

PRESCRIPTION RATE⁷



NH 52.8
U.S. 58.7

OF OPIOID PRESCRIPTIONS PER 100 PEOPLE (2017)

TREATMENT ADMISSIONS⁸



NH 1:240
U.S. 1:283

OF OPIOID-RELATED SUBSTANCE USE TREATMENT ADMISSIONS TO ADULT POPULATION (2016; 25-54 YEAR OLDS)

DEATHS¹



NH 24.0%
U.S. 12.8%

% OF ADULT DEATHS THAT ARE OPIOID-RELATED (2013-2017; 25-54 YEAR OLDS)

SOURCES

- Centers for Disease Control and Prevention, National Center for Health Statistics, CDC WONDER Online Database.
- Regions are defined as Metro and Non-metro per the 2013 Rural-Urban Continuum Codes (U.S. Department of Agriculture, 2013).
- McLellan et al. (2000). *JAMA*, 284(13), pp. 1689-1695.
- SAMHSA, Center for Behavioral Health Statistics and Quality (2018). 2017 National survey on drug use and health.

- Florence et al. (2016). *Med Care*, 54(10), pp. 901-906.
- Child Trends (2019). State level data for understanding child welfare in the United States: Foster care.
- Centers for Disease Control and Prevention (2017). U.S. state prescribing rates, 2017
- SAMHSA (2018). Treatment Episode Data Set (TEDS): 2015-2016.

Regional Maps - Single Color by FreeVectorMaps.com